

DISCOVERING GIS

Introductory Workshops for Educators K-12
Presented by CIPE and ESRI



Come discover the wide world of Geographic Information System and bring the excitement of mapping into your classroom! Brought to you by leaders in educational technology tools, the Center for Image Processing in Education and Environmental Systems Research Institute, Inc., you'll learn effective ways to introduce and integrate GIS into your curriculum. Engage your students in critical thinking and inquiry as they visualize patterns, analyze data, and ask and answer questions of interest to them!

Workshops Cover:

- What is a GIS?
- Spatial analysis concepts
- Classroom lessons and applications
- How to integrate ArcView into your classroom



1998 Schedule:

- April 14-15 Las Vegas, NV
(before NSTA—National Science Teachers Association Conference)
- June 25-26 San Diego, CA
(after NECC—National Educational Computing Conference)
- September 3-4 Atlanta, GA
(before NAAEE—North American Association for Environmental Education)

TO REGISTER:

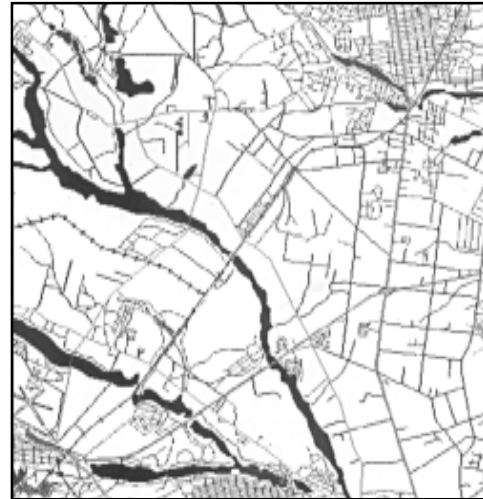


Call CIPE at 800/322-9884 or



Fax registration form on backside to 520/327-0175

OR: Call CIPE at 800/322-9884 to inquire about hosting a GIS workshop at your school.



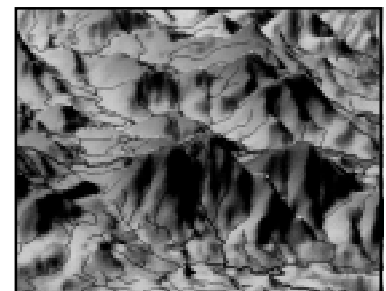
2-Day Workshop

for Windows® 95 and Macintosh
\$149 per person

GIS and Education:

Perfect for educators of

- Earth & Space Science
- Geography
- Science
- Mathematics
- Biology
- and more!



You'll Get:

- Hands-on instruction on how to use ArcView software in the classroom
- ArcExplorer mapping software and datasets
- Introductory classroom lessons to help you get started
- \$100 coupon for any ESRI product
- and more!

Hurry! Limited space available!