



The Center for
Image Processing in
Education presents...

CIPE 1998 Regional Image Processing Workshops



*The Nation's Premier Digital
Image Analysis Training!*

Includes

- ▶ *4 days of intensive hands-on training*
- ▶ *75 ready-to-use classroom lessons*
- ▶ *Tools and ideas for utilizing the Internet*
- ▶ *Toll-free technical support*
- ▶ *Optional course credit*

\$ 695

Level I

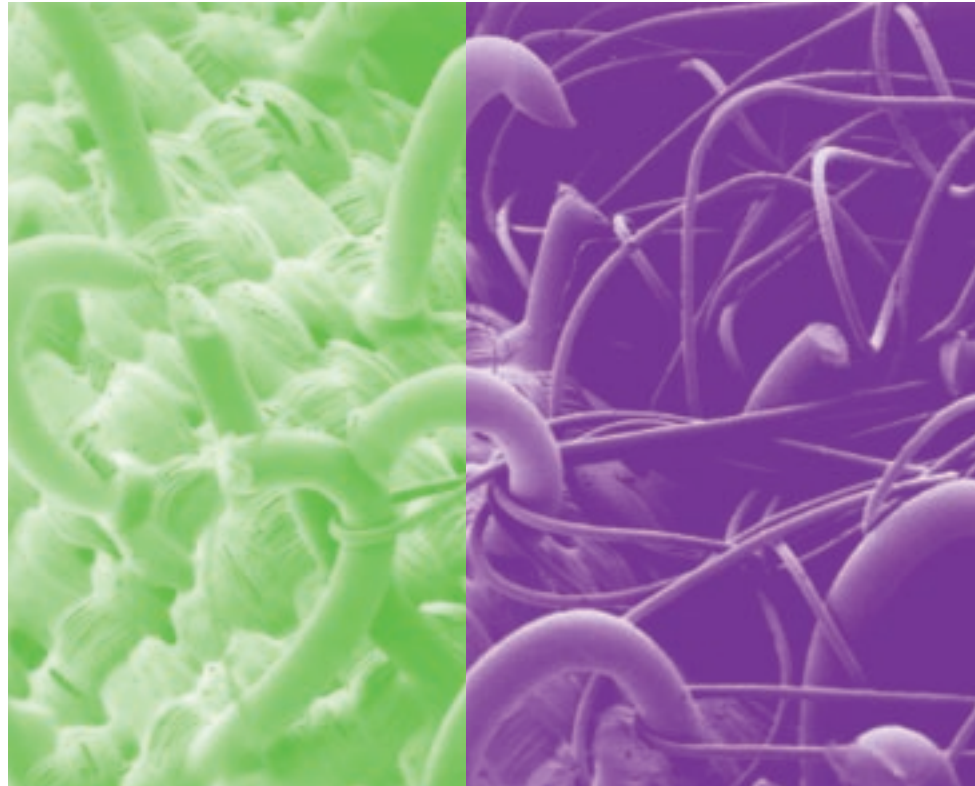
Foundations of Image Processing

Sacramento, CA Macintosh® and Windows® 95	June 17-20
St. Louis, MO Macintosh® and Windows® 95	June 24-27
Mesa, AZ Macintosh® and Windows® 95	July 18-21
Chicago, IL Macintosh® and Windows® 95	August 5-8
Washington, D.C. Macintosh® and Windows® 95	August 13-16

Level II

Applications of Image Processing

Mesa, AZ Macintosh® and Windows® 95	July 18-21
---	------------



800/322-9884

<http://www.cipe.com>

***Revealing the power and elegance
of digital image analysis for learning
science, mathematics, and technology.***



CIPE 1998 Regional Image Processing Workshops

Level I

Foundations of Image Processing

Description

Designed for educators new to using image processing technology in their classrooms. Enable your students to create, display, enhance, and analyze digital images from scanners, CD-ROMs, digital cameras, and the Internet.

What you get

- 32 hours of intensive hands-on instruction plus open lab time
- Sourcebook and CD-ROM with 75 ready-to-use lessons in science and mathematics
- Toll-free technical support
- Optional CEU credit (fee required)

Topics

Day 1

Understanding digital images
Image processing tools
Measurement and labelling
Enhancing digital images

Day 2

More image processing tools
Using your own images
Classroom implementation

Day 3

Animation
Visualizing image data
Understanding color and 3-D

Day 4

Developing classroom activities
Representing data as images
Exploring the IPT Sourcebook activities

Level II

Applications of Image Processing

Description

A project-based course for teachers who have attended a Foundations Workshop. Expand uses of image processing with advanced techniques, image creation, the Internet, lesson development, and student research.

What you get

- 32 hours of project-based learning plus open lab time
- Resource Handbook and CD-ROM
- Toll-free technical support
- Optional CEU credit (fee required)

Topics

Day 1

NIH Image –OR– ImagePC refresher
Digitizing images

Day 2

Advanced image analysis
Creating customized lessons

Day 3

Imaging and the Internet
Applications of image processing

Day 4

Integrating with other software
Advanced macro programming
Project sharing

Workshop Sites

Level I

Foundations of Image Processing

Sacramento, CA June 17-20

Macintosh® and Windows® 95
Hotel: Executive Inn
Phone: 916/929-5600
Rate: \$79 single/double
Registration cut-off: May 4, 1998

St. Louis, MO June 24-27

Macintosh® and Windows® 95
Hotel: Henry VIII Hotel
Phone: 800/325-1588
Rate: \$75 single, \$80 double
Registration cut-off: May 11, 1998

Mesa, AZ July 18-21

Macintosh® and Windows® 95
Hotel: Mesa Pavilion Hilton
Phone: 602/833-5555
Rate: \$69 single/double
Registration Cut-Off: June 8, 1998

Chicago, IL August 5-8

Macintosh® and Windows® 95
Site: Latin School of Chicago
Phone: _____
Rate: \$___ single/double
Registration Cut-Off: June 22, 1998

Washington, D.C. August 13-16

Macintosh® and Windows® 95
Hotel: Tyson's Westpark Hotel
Phone: 703/734-2800
Rate: \$89 single/double
Registration Cut-Off: June 29, 1998

Level II

Applications of Image Processing

Mesa, AZ July 18-21*

Macintosh® and Windows® 95
Hotel: Mesa Pavilion Hilton
Phone: 602/833-5555
Workshop rate: \$69 single/double
Registration Cut-Off: June 8, 1998

* Followed by CIPE's 1998 National Imaging Technology Education Conference July 23-25 at the Mesa Pavilion Hilton

Instructional Staff

Our instructors are master teachers who have successfully used image processing in their own classrooms. With extensive practical and technical knowledge, they are able to provide for the individual needs and interests of workshop participants and deliver consistent, high-quality instruction.

Logistics

Participants are responsible for arranging and paying for their own transportation, lodging, and meals.

Lodging

Host hotels are offering special workshop rates. Be sure to mention that you are attending a CIPE workshop.

Transportation

CIPE and Travel 1 Carlson Wagonlit Travel have arranged for special airline discounts for attendees of our workshops and conferences. Please call Travel 1 at 800/388-2111 for information and reservations. (Please mention that you are attending a CIPE workshop.)

Hardware Requirements

Workshop participants may bring their own computer or rent one. Information on computer rental companies will be sent with registration packets. The minimum system requirements are:

Macintosh® Color Macintosh, 2.5MB free RAM, 4MB free hard drive space, CD-ROM, System 7.0 or higher.

Windows® 95 486, 88MHz, 16MB total RAM, 20MB free hard drive space, CD-ROM drive, VGA Monitor. Mouse is highly recommended.

Participants are invited to bring their own peripherals such as scanners and digital cameras.

Course Credit Option

Workshop participants may earn up to three Continuing Education Units (CEUs) for a \$25 processing fee.

Registration Packets

Registrants should receive confirmation of their registration soon after CIPE receives their deposit or purchase order. A full registration packet will be sent to the participant's home address 45 days prior to the start of the workshop.

Award-winning CIPE products for your classroom

Call 800/322-9884 for more information or visit our website at <http://www.cipe.com>. Single user, mini-site license, and site licenses available.

HIP Biology 1

Grades 9–12

HIP Biology 2

Grades 9–12

HIP Mathematic s

Grades 5–8

HIP Physics

Grades 9–12

HIP for Educators

Developed by the

Image Processing for Teaching Project

At the Lunar and Planetary Laboratory of The University of Arizona®
Tucson, Arizona

Discovering Image Processing

Grades 9–12

A&P Technologist

College Level

Developed by the

Center for Image Processing in Education

With funding from the National Science Foundation
Advanced Technological Program

On-site workshops A cost-effective option for schools and districts

Ask about
our matching
funds!

If CIPE Regional Workshops have generated great interest in your school or district, you can have this same, nationally-renowned instruction conveniently at your site—at a significant savings!

Hosting a workshop helps develop a spirit of camaraderie and cooperation among your staff. Workshops can be scheduled for any time of the year, involving from eight to eighteen participants for up to five days. The workshop curriculum can be customized to meet the needs of your staff and students.

To find out more about scheduling your own Image Processing workshop, and to see if you qualify for matching funds at your location, contact CIPE at 800/322-9884, option 3.

Price guidelines for 18 participants

Number of days	3	4	5
Cost *	\$5,500	\$6,300	\$7,000
* Plus instructor travel expenses			

1998 National Imaging Technologies in Education Conference

Join us July 23–25, 1998, for the National Imaging Technology Education Conference in Phoenix, Arizona. Meet with colleagues who are successfully using image processing in their classrooms and laboratories and exchange exciting new ideas and experiences. The NITEC explores the unlimited possibilities for bringing image processing to life in your classroom.

NITEC is conveniently scheduled after the Mesa Regional Workshops so you can combine both for a well-rounded, cost-effective, and rewarding experience. Watch for additional NITEC 98 information in your mail soon!

NON-PROFIT ORG.
U. S. POSTAGE
PAID
TUCSON, ARIZONA
PERMIT NO. 420

**The Nation's Premier Digital Image Analysis Training—
Now For Windows® 95 and Macintosh!**
Address Correction Requested

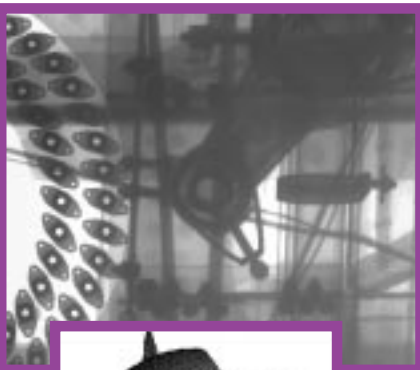
Center for Image Processing in Education
PO Box 13750
Tucson AZ 85732-3750



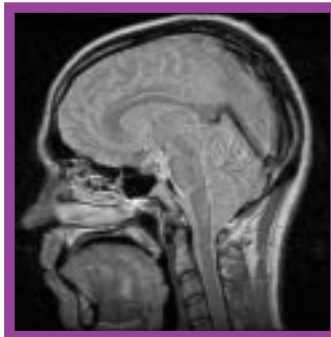
1998 CIPE Regional Workshops

The Nation's Premier Digital Analysis Training!

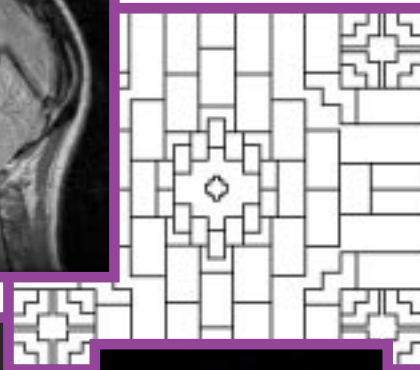
Technology



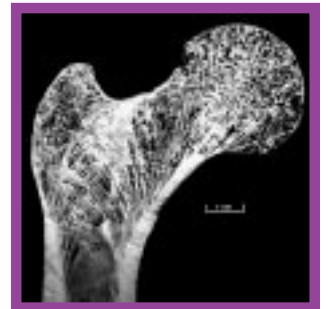
Biology



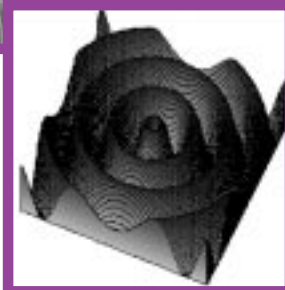
Mathematics



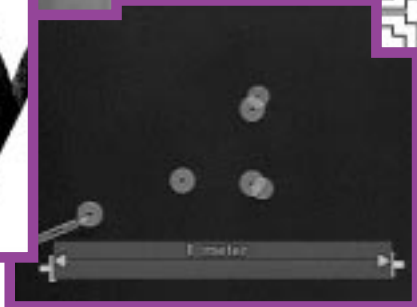
Anatomy & Physiology



Physics



Physical Science



Earth Science



"A whole new world of instructional capabilities has opened for us. Our students now do science like scientists — week well spent!"

Ann Schiebner, Science Instructor
Grosse Ile High School
Grosse Ile, Michigan

